

# Music Notes & Rests Chart

	<b>Whole Note</b> (semibreve)	4 beats
	<b>Whole Rest</b> (semibreve rest)	4 beats
	<b>Half Note</b> (minim)	2 beats
	<b>Half Rest</b> (minim rest)	2 beats
	<b>Quarter Note</b> (crotchet)	1 beat
	<b>Quarter Rest</b> (crotchet rest)	1 beat
	<b>Eighth Note</b> (quaver)	$\frac{1}{2}$ beat
	<b>Eighth Rest</b> (quaver rest)	$\frac{1}{2}$ beat
	<b>Sixteenth Note</b> (semiquaver)	$\frac{1}{4}$ beat
	<b>Sixteenth Rest</b> (semiquaver rest)	$\frac{1}{4}$ beat
	<b>Thirty-Second Note</b> (demisemiquaver)	$\frac{1}{8}$ beat
	<b>Thirty-Second Rest</b> (demisemiquaver rest)	$\frac{1}{8}$ beat

Line notes



**E**very **G**ood **B**oy **D**eserves **F**ootball

Space notes



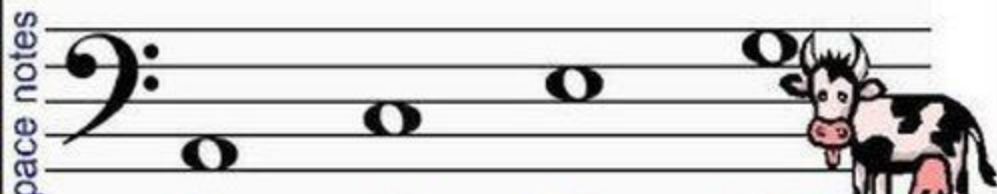
**F** **A** **C** **E**

Line notes



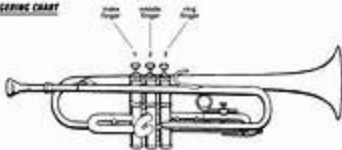
**G**reedy **B**ig **D**og's **F**all **A**sleep

Space notes



**A**ll **C**ows **E**at **G**rass

**TRUMPET FINGERING CHART**



First staff of music: Treble clef, key signature of one flat (Bb). Notes: Bb, Ab, Gb, Fb, Eb, D, C, B. Fingerings: 1 2 1, 1 1, 2 1, 1 2, 1.

Second staff of music: Treble clef, key signature of one flat (Bb). Notes: Bb, Ab, Gb, Fb, Eb, D, C, B. Fingerings: 1, 1, 1 1 1, 1 1, 1 1.

Third staff of music: Treble clef, key signature of one flat (Bb). Notes: Bb, Ab, Gb, Fb, Eb, D, C, B. Fingerings: 1 1, 1, 1, 1, 1 1.

Fourth staff of music: Treble clef, key signature of one flat (Bb). Notes: Bb, Ab, Gb, Fb, Eb, D, C, B. Fingerings: 1 1, 1, 1, 1, 1 1.

Fifth staff of music: Treble clef, key signature of one flat (Bb). Notes: Bb, Ab, Gb, Fb, Eb, D, C, B. Fingerings: 1, 1, 1, 1, 1, 1.

Sixth staff of music: Treble clef, key signature of one flat (Bb). Notes: Bb, Ab, Gb, Fb, Eb, D, C, B. Fingerings: 1 1, 1 1, 1, 1, 1.

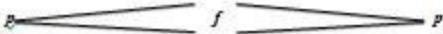
# Music Dynamics Chart

<i>ppp</i>	<i>pianississimo</i>	Very, very soft.
<i>pp</i>	<i>pianissimo</i>	Very soft.
<i>p</i>	<i>piano</i>	Soft.
<i>mp</i>	<i>mezzo piano</i>	Moderately soft.
<i>mf</i>	<i>mezzo forte</i>	Moderately loud.
<i>f</i>	<i>forte</i>	Loud.
<i>ff</i>	<i>fortissimo</i>	Very loud.
<i>fff</i>	<i>fortississimo</i>	Very, very loud.

gradually getting louder



gradually getting softer



crescendo (*cresc.*)

decrescendo (*decresc.*)  
or diminuendo (*dim.*)

# Major Scales

C major scale

C D E F G A B C

D major scale

D E F# G A B C# D

E major scale

E F# G# A B C# D# E

F major scale

F# G# A# B C# D# E# F#

G major scale

G A B C D E F G

A major scale

A B C D E F G A

B major scale

B C# D# E F# G# A# B

C sharp major scale

C# D E F# G A B C#

D sharp major scale

D# E F# G# A B C# D#

E sharp major scale

E# F# G# A# B C# D# E#

F major scale

F G A B C D E F

G flat major scale

Gb Ab Bb C D Eb F Gb

A flat major scale

Ab Bb C Db Eb F G Ab

B flat major scale

Bb C Db Eb F Gb Ab Bb

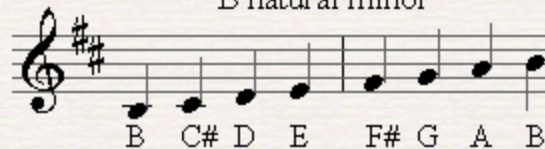
## A natural minor



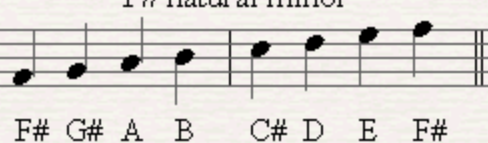
## E natural minor



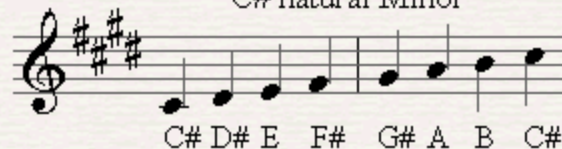
## B natural minor



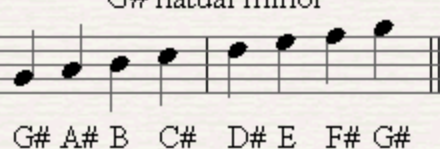
## F# natural minor



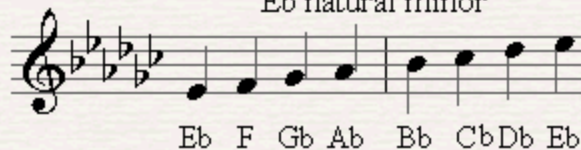
## C# natural Minor



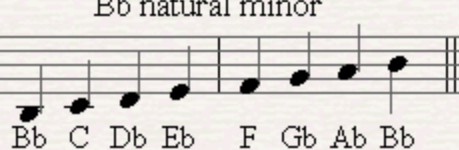
## G# natural minor



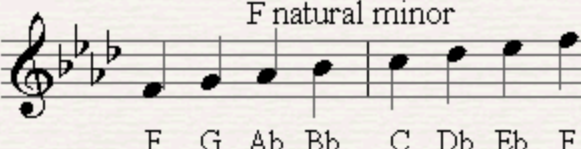
## Eb natural minor



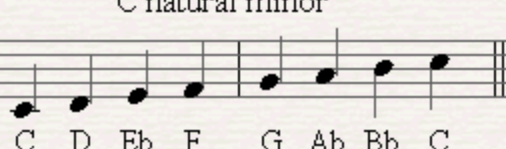
## Bb natural minor



## F natural minor



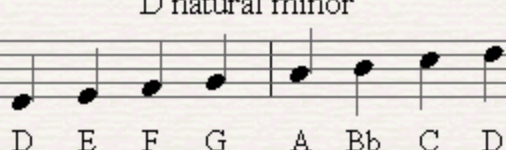
## C natural minor



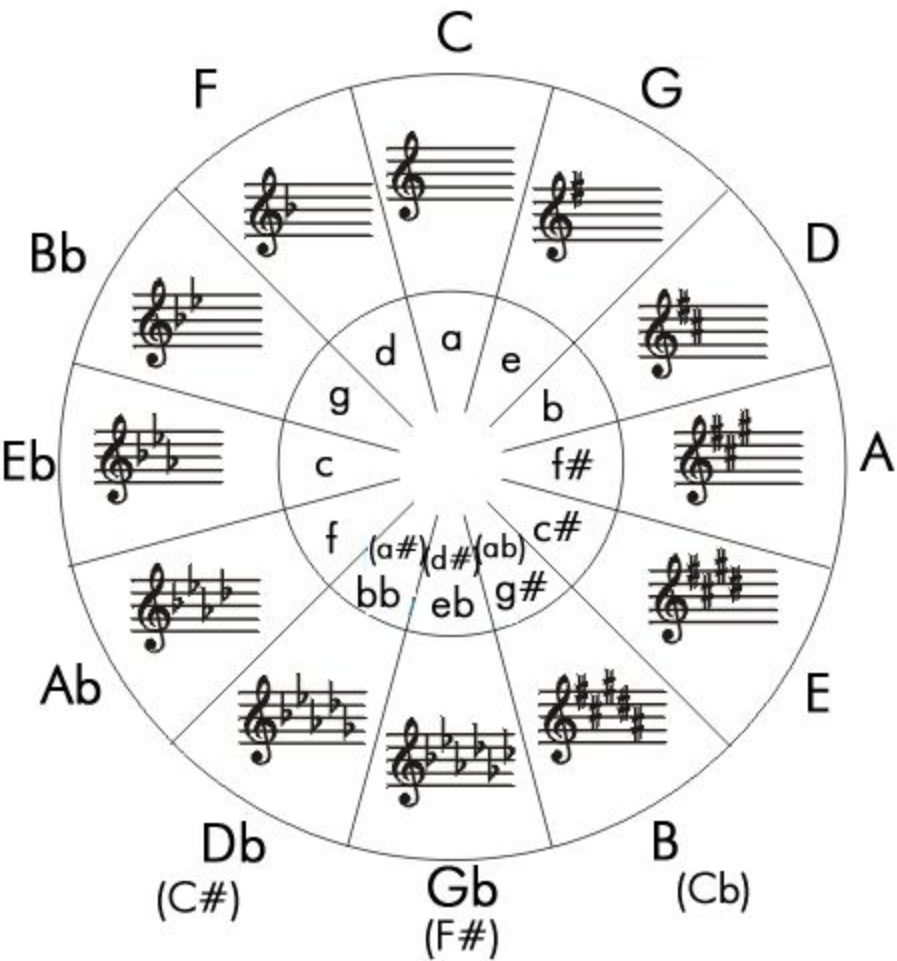
## G natural minor



## D natural minor

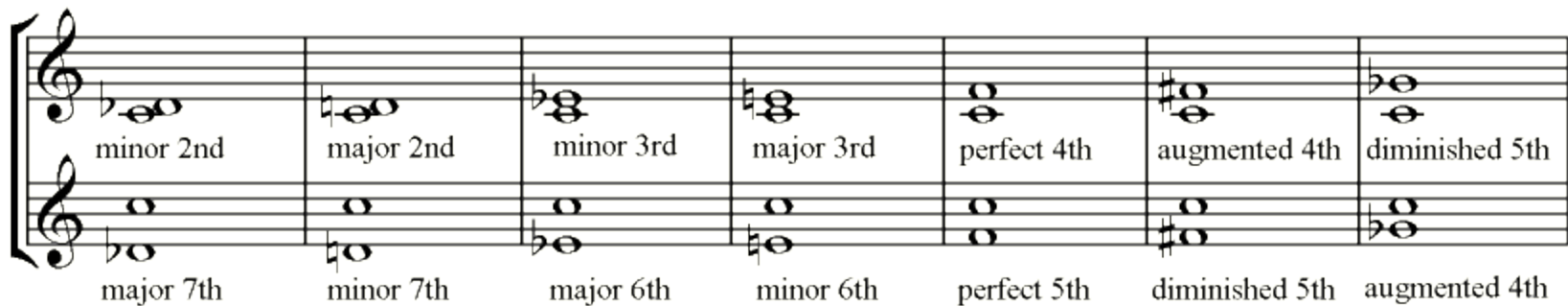


<b>Number of semitones apart</b>	<b>Music interval</b>	<b>Notes</b>
1	Minor 2nd	C - C#
2	Major 2nd	C - D
3	Minor 3rd	C - D#
4	Major 3rd	C - E
5	Perfect 4th	C - F
6	Augmented 4th / Diminished 5th	C - F#
7	Perfect 5th	C - G
8	Minor 6th	C - G#
9	Major 6th	C - A
10	Minor 7th	C - A#
11	Major 7th	C - B
12	Octave	C - C



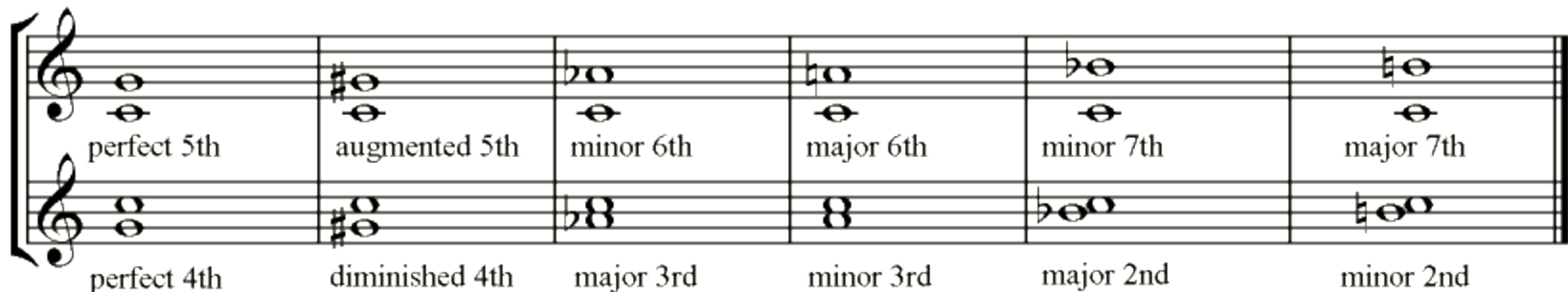


# Inversion of Intervals



musical notation showing interval inversions 1 through 7. Each interval is shown in two staves: the upper staff shows the original interval and the lower staff shows its inversion. The intervals and their inversions are:

Interval	Inversion
minor 2nd	major 7th
major 2nd	minor 7th
minor 3rd	major 6th
major 3rd	minor 6th
perfect 4th	perfect 5th
augmented 4th	diminished 5th
diminished 5th	augmented 4th



musical notation showing interval inversions 8 through 12. Each interval is shown in two staves: the upper staff shows the original interval and the lower staff shows its inversion. The intervals and their inversions are:

Interval	Inversion
perfect 5th	perfect 4th
augmented 5th	diminished 4th
minor 6th	major 3rd
major 6th	minor 3rd
minor 7th	major 2nd
major 7th	minor 2nd

# Music Modes Chart

Key	Ionian	Dorian	Phrygian	Lydian	Mixolydian	Aeolian	Locrian
C Major	C	D	E	F	G	A	B
G Major	G	A	B	C	D	E	F#
D Major	D	E	F#	G	A	B	C#
A Major	A	B	C#	D	E	F#	G#
E Major	E	F#	G#	A	B	C#	D#
B Major	B	C#	D#	E	F#	G#	A#
F Major	F	G	A	Bb	C	D	E
Bb Major	Bb	C	D	Eb	F	G	A
Eb Major	Eb	F	G	Ab	Bb	C	D
Ab Major	Ab	Bb	C	Db	Eb	F	G
Db Major	Db	Eb	F	Gb	Ab	Bb	C
Gb Major	Gb	Ab	Bb	Cb	Db	Eb	F

# Key Chord Chart

Major Key	I	II	III	IV	V	VI	VII
A	A	Bm	C#m	D	E	F#m	G#dim
B	B	C#m	D#m	E	F#	G#m	A#dim
C	C	Dm	Em	F	G	Am	Bdim
D	D	Em	F#m	G	A	Bm	C#dim
E	E	F#m	G#m	A	B	C#m	D#dim
F	F	Gm	Am	Bb	C	Dm	Edim
G	G	Am	Bm	C	D	Em	F#dim
Minor Key	I	II	III	IV	V	VI	VII
Am	Am	Bdim	C	Dm	Em	F	G
Bm	Bm	C#dim	D	Em	F#m	G	A
Cm	Cm	Ddim	Eb	Fm	Gm	Ab	Bb
Dm	Dm	Edim	F	Gm	Am	Bb	C
Em	Em	F#dim	G	Am	Bm	C	D
Fm	Fm	Gdim	Ab	Bbm	Cm	Db	Eb
Gm	Gm	Adim	Bb	Cm	Dm	Eb	F

# The Musical Chord Chart

Key	Major	Minor	Aug	Maj6th	Min6th	Dom7th	Min7th	Maj7th	Dim7th	Dom9th	Dim9th
<b>C</b>	C E G	C E G	C E G#	C E G A	C E G A	C E G Bb	C E G Bb	C E G B	C E Gb A	C E G B D	C E G B Db
<b>C#</b>	C# F# G#	C# E# G#	C# F# A	C# F# G# A#	C# E# G# A#	C# F# G# B	C# E# G# B	C# F# G# C	C# E# G# Bb	C# F# G# B D#	C# F# G# B D
<b>Db</b>	Db F Ab	Db E Ab	Db F A	Db F Ab Bb	Db E Ab Bb	Db F Ab B	Db E Ab B	Db F Ab C	Db E G Bb	Db F Ab B Eb	Db F Ab B D
<b>D</b>	D F# A	D F A	D F# A#	D F# A B	D F A B	D F# A C	D F A C	D F# A C#	D F G# B	D F# A C E	D F# A C E D
<b>D#</b>	D# G A#	D# F# A#	D# G B	D# G A# C	D# F# A# C	D# G A# C#	D# F# A# C#	D# G A# D	D# F# A C	D# G A# C# F	D# G A# C# E
<b>Eb</b>	Eb G Bb	Eb Gb Bb	Eb G B	Eb G Bb C	Eb Gb Bb C	Eb G Bb Db	Eb Gb Bb Db	Eb G Bb D	Eb Gb A C	Eb G Bb Db F	Eb G Bb Db E
<b>E</b>	E G# B	E G B	E G# C	E G# B C#	E G B C#	E G# B D	E G B D	E G# B D#	E G A# C#	E G# B D F#	E G# B D F
<b>F</b>	F A C	F Ab C	F A C#	F A C D	F Ab C D	F A C E b	F Ab C E b	F A C E	F Ab B D	F A C E b G	F A C E b Gb
<b>F#</b>	F# A# C#	F# A C#	F# A# D	F# A# C# D#	F# A C# D#	F# A# C# E	F# A C# E	F# A# C# F	F# A C D#	F# A# C# E G#	F# A# C# E G
<b>Gb</b>	Gb Bb Db	Gb A Db	Gb Bb D	Gb Bb Db Eb	Gb A Db Eb	Gb Bb Db E	Gb A Db E	Gb Bb Db F	Gb A C E b	Gb Bb Db E Ab	Gb Bb Db E G
<b>G</b>	G B D	G Bb D	G B D#	G B D E	G Bb D E	G B D F	G Bb D F	G B D F#	G A# C# E	G B D F A	G B D F Ab
<b>G#</b>	G# C D#	G# B D#	G# C E	G# C D# F	G# B D# F	G# C D# F#	G# B D# F#	G# C D# G	G# B D F	G# C D# F# A#	G# C D# F# A
<b>Ab</b>	Ab C Eb	Ab B Eb	Ab C E	Ab C Eb F	Ab B Eb F	Ab C Eb Gb	Ab B Eb Gb	Ab C Eb G	Ab B D F	Ab C Eb Gb Bb	Ab C Eb Gb A
<b>A</b>	A C# E	A C E	A C# F	A C# E F#	A C E F#	A C# E G	A C E G	A C# E G#	A C D# F#	A C# E G B	A C# E G Bb
<b>Bb</b>	Bb D F	Bb Db F	Bb D F#	Bb D F G	Bb Db F G	Bb D F Ab	Bb Db F Ab	Bb D F A	Bb Db E G	Bb D F Ab C	Bb D F Ab B
<b>B</b>	B D# F#	B D F#	B D# G	B D# F# G#	B D F# G#	B D# F# A	B D F# A	B D# F# A#	B D F G#	B D# F# A# C#	B D# F# A C

## Transposition Chart

A	A <sup>♯</sup> B <sup>b</sup>	B	C	C <sup>♯</sup> D <sup>b</sup>	D	D <sup>♯</sup> E <sup>b</sup>	E	F	F <sup>♯</sup> G <sup>b</sup>	G	G <sup>♯</sup> A <sup>b</sup>	A
A <sup>♯</sup> B <sup>b</sup>	B	C	C <sup>♯</sup> D <sup>b</sup>	D	D <sup>♯</sup> E <sup>b</sup>	E	F	F <sup>♯</sup> G <sup>b</sup>	G	G <sup>♯</sup> A <sup>b</sup>	A	A <sup>♯</sup> B <sup>b</sup>
B	C	C <sup>♯</sup> D <sup>b</sup>	D	D <sup>♯</sup> E <sup>b</sup>	E	F	F <sup>♯</sup> G <sup>b</sup>	G	G <sup>♯</sup> A <sup>b</sup>	A	A <sup>♯</sup> B <sup>b</sup>	B
C	C <sup>♯</sup> D <sup>b</sup>	D	D <sup>♯</sup> E <sup>b</sup>	E	F	F <sup>♯</sup> G <sup>b</sup>	G	G <sup>♯</sup> A <sup>b</sup>	A	A <sup>♯</sup> B <sup>b</sup>	B	C
C <sup>♯</sup> D <sup>b</sup>	D	D <sup>♯</sup> E <sup>b</sup>	E	F	F <sup>♯</sup> G <sup>b</sup>	G	G <sup>♯</sup> A <sup>b</sup>	A	A <sup>♯</sup> B <sup>b</sup>	B	C	C <sup>♯</sup> D <sup>b</sup>
D	D <sup>♯</sup> E <sup>b</sup>	E	F	F <sup>♯</sup> G <sup>b</sup>	G	G <sup>♯</sup> A <sup>b</sup>	A	A <sup>♯</sup> B <sup>b</sup>	B	C	C <sup>♯</sup> D <sup>b</sup>	D
D <sup>♯</sup> E <sup>b</sup>	E	F	F <sup>♯</sup> G <sup>b</sup>	G	G <sup>♯</sup> A <sup>b</sup>	A	A <sup>♯</sup> B <sup>b</sup>	B	C	C <sup>♯</sup> D <sup>b</sup>	D	D <sup>♯</sup> E <sup>b</sup>
E	F	F <sup>♯</sup> G <sup>b</sup>	G	G <sup>♯</sup> A <sup>b</sup>	A	A <sup>♯</sup> B <sup>b</sup>	B	C	C <sup>♯</sup> D <sup>b</sup>	D	D <sup>♯</sup> E <sup>b</sup>	E
F	F <sup>♯</sup> G <sup>b</sup>	G	G <sup>♯</sup> A <sup>b</sup>	A	A <sup>♯</sup> B <sup>b</sup>	B	C	C <sup>♯</sup> D <sup>b</sup>	D	D <sup>♯</sup> E <sup>b</sup>	E	F
F <sup>♯</sup> G <sup>b</sup>	G	G <sup>♯</sup> A <sup>b</sup>	A	A <sup>♯</sup> B <sup>b</sup>	B	C	C <sup>♯</sup> D <sup>b</sup>	D	D <sup>♯</sup> E <sup>b</sup>	E	F	F <sup>♯</sup> G <sup>b</sup>
G	G <sup>♯</sup> A <sup>b</sup>	A	A <sup>♯</sup> B <sup>b</sup>	B	C	C <sup>♯</sup> D <sup>b</sup>	D	D <sup>♯</sup> E <sup>b</sup>	E	F	F <sup>♯</sup> G <sup>b</sup>	G
G <sup>♯</sup> A <sup>b</sup>	A	A <sup>♯</sup> B <sup>b</sup>	B	C	C <sup>♯</sup> D <sup>b</sup>	D	D <sup>♯</sup> E <sup>b</sup>	E	F	F <sup>♯</sup> G <sup>b</sup>	G	G <sup>♯</sup> A <sup>b</sup>
A	A <sup>♯</sup> B <sup>b</sup>	B	C	C <sup>♯</sup> D <sup>b</sup>	D	D <sup>♯</sup> E <sup>b</sup>	E	F	F <sup>♯</sup> G <sup>b</sup>	G	G <sup>♯</sup> A <sup>b</sup>	A

### Transpose a Song from One Key to Another

To transpose from one key to another, locate the row that is the same name as your key. In the Key of D that would be the 6th row on this chart.

We want to now play this song in the Key of B. So starting with the Key of D you look up or down to your new key. In this case look up to the row starting with B, this is the Key of B. Instead of playing an A Chord in the key of D you are now going to play an F chord in the Key of B.

Key of D: D, G, A, now becomes B, E, F in the Key of B